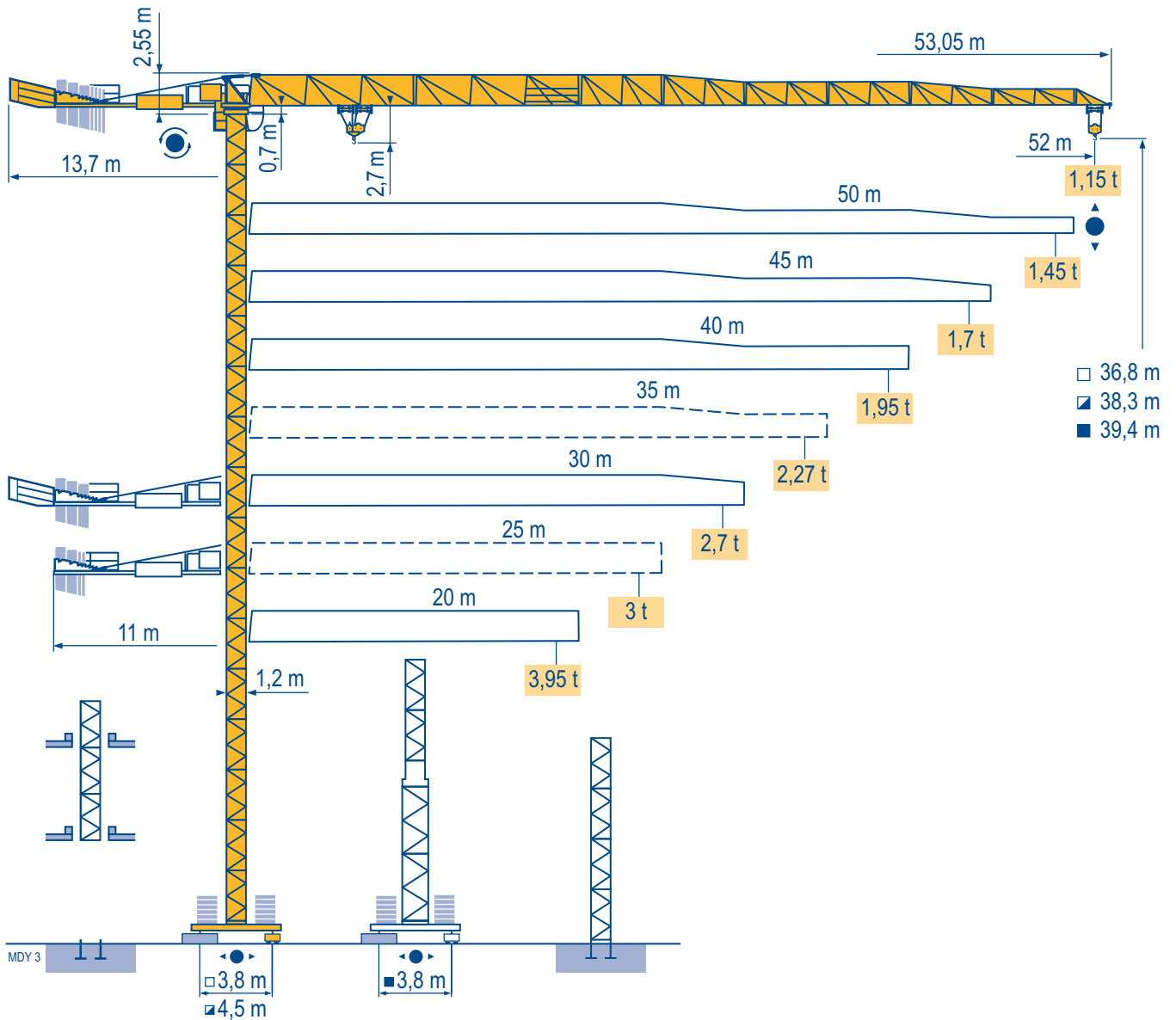


MCT 88



City Topless

Mat / Réactions \square 1,2 m

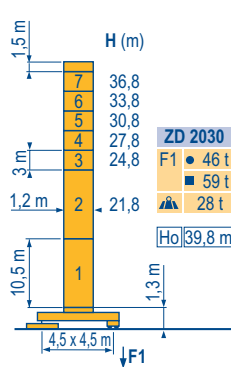
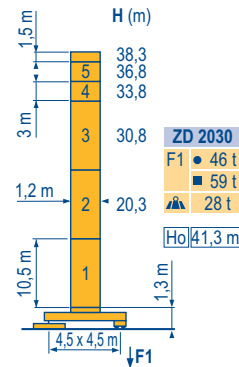
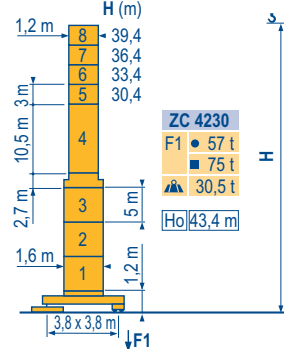
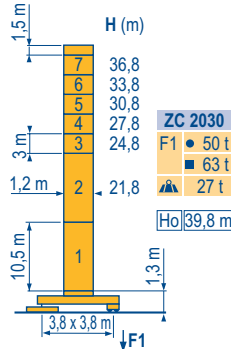
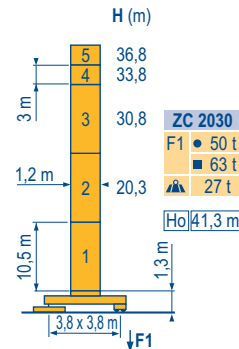
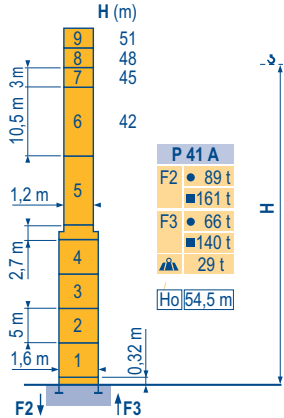
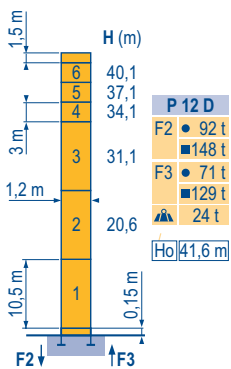
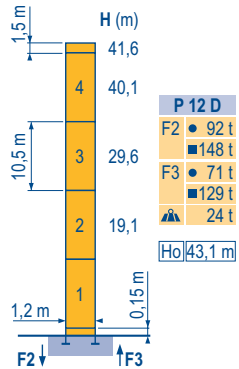
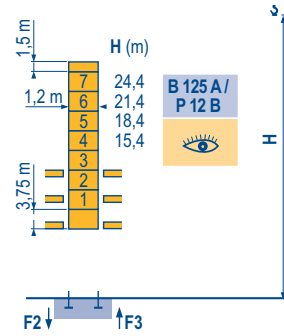
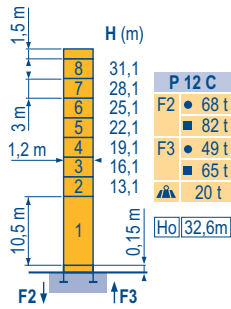
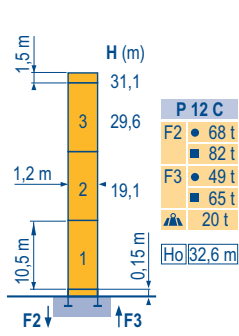
Maste / Eckdrücke \blacktriangle
20 m \Rightarrow 52 m

Masts / Reactions
Mástil / Reacciones
Torre / Reazioni

Tramo / Reações

Композиции башни / Реакции

MDY 4



ZC 2030 - ZC 4230 - ZD 2030



CityTopless
MCT 88

POTAIN

FR

- Réactions en service
- Réactions hors service



A vide sans lest (ni train de transport) avec flèche et hauteur maximum.

Ho

H sans cabine

DE

Reaktionskräfte in Betrieb
Reaktionskräfte außer Betrieb

Ohne Last, Ballast (und Transportachse), mit Maximalausleger und Maximalhöhe.

H Ohne Fahrerhaus

EN

Reactions in service
Reactions out of service

Without load, ballast (or transporte), with maximum jib and maximum height.

H without cab

ES

Reacciones en servicio
Reacciones fuera de servicio

Sin carga, sin lastre, (ni tren de transporte), flecha y altura máxima.

H sin cabina

IT

Reazioni in servizio
Reazioni fuori servizio

A vuoto, senza zavorra (ne assai di trasporto) con braccio massimo e altezza massima.

H senza cabina

PT

Reações em serviço
Reações fora de serviço

Sem carga (nem trem de transporte) - sem lastro com lança e altura máximas.

H sem cabine

RU

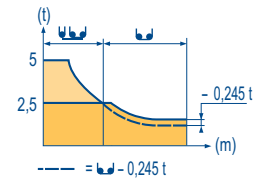
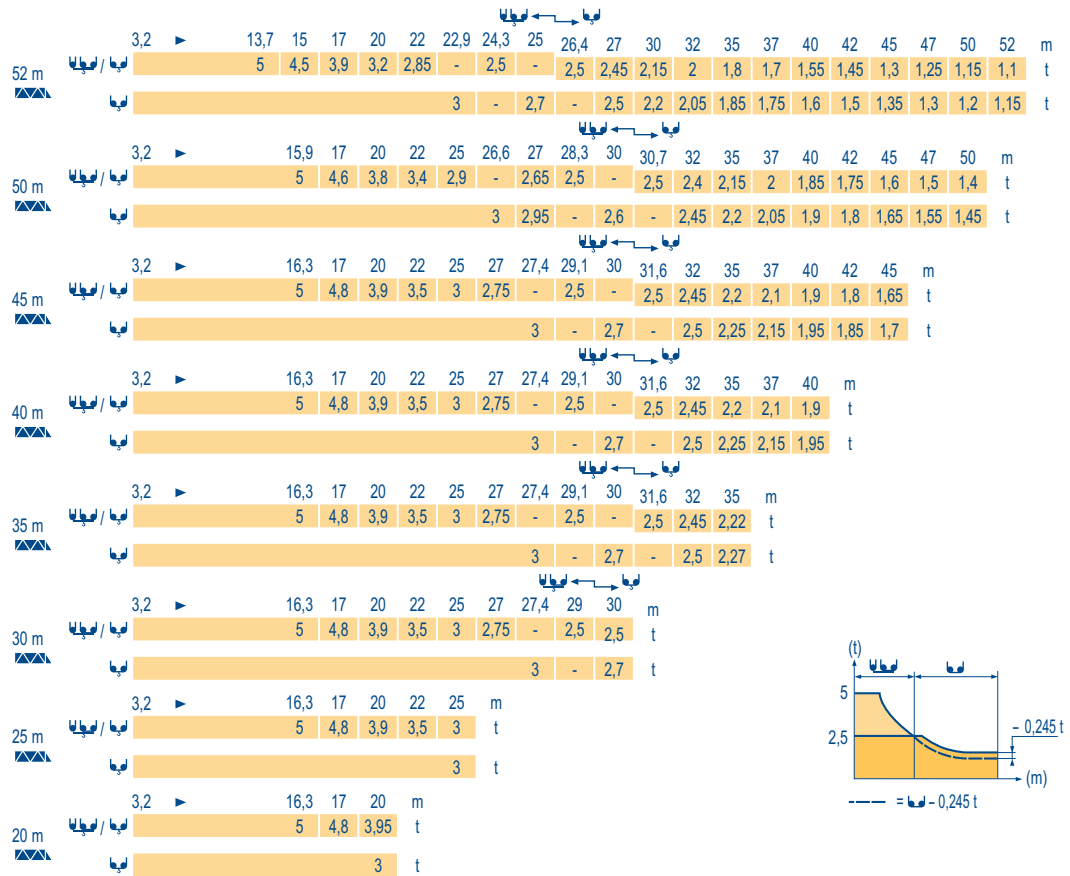
Реакции при работе
Реакции в покое

Вес без груза, балласта (или транспортных осей), с максимальной длиной стрелы и максимальной высотой.

Высота без кабины

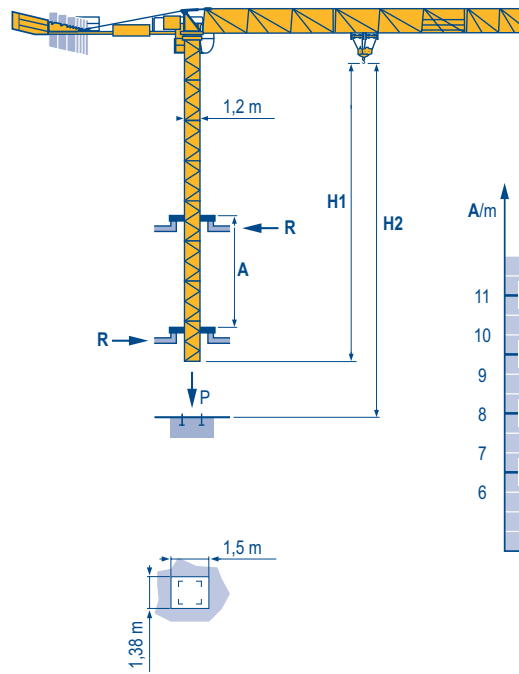
Courbes de charges
Lastkurven
Load diagrams
Curvas de cargas
Curve di carico
Curva de cargas
Диаграммы грузоподъемностей

MDY 2

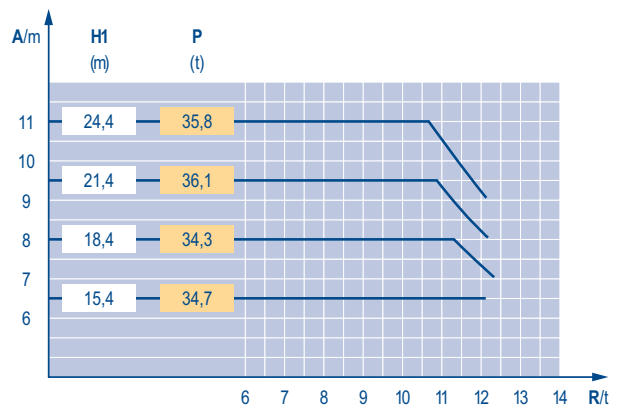


Télescopage sur dalles
Kletterkrane im Gebäude
Climbing crane
Telescopage gruas trepadoras
Gru in cavedio
Telescopagem sobre lages
Кран, ползущий внутри здания

MDY 3



B 125 A





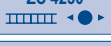

City Topless
MCT 88

POTAIN

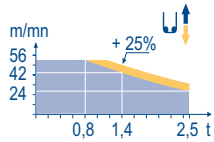
	FR	DE	EN	ES	IT	PT	RU
A	Distance entre cadres	Abstand zwischen den Rahmen	Distance between collars	Distancia entra marcos	Distanza fra i telai	Distância entre quadros	Расстояние между рамками крепления
H1	Hauteur grue	Kranhöhe	Crane height	Altura grúa	Altezza gru	Altura da grua	Высота крана
P	Poids de la grue (en service)	Krangewicht (in Betrieb)	Crane weight (in service)	Peso de la grúa (en servicio)	Peso della gru (in servizio)	Peso da grua (em serviço)	Вес крана (при работе)
R	Réaction horizontale	Horizontalkräfte	Horizontal reaction	Reaccion horizontal	Reazione orizzontale	Reacção horizontal	Горизонтальные реакции
	Voir télescopage sur dalles	Siehe Kletterkrane im Gebäude	See climbing crane	Vea grua trepadora	Consultare gru in cavedio	Ver telescopagem sobre lages	См. кран, ползущий внутри здания

Mécanismes
Antriebe
Mechanisms
Mecanismos
Meccanismi
Mecanismos
Механизмы

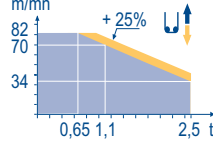
MDY 4

		U						U				ch - PS hp	kW														
▲	15 LVF 13 Optima	m/min	2,8	→	7,6	→	24	→	42	→	56	1,4	→	3,8	→	12	→	21	→	28	15	11	200 m				
		t	2,5		2,5		2,5		1,4		0,8	5		5		5		2,8		1,6							
	25 LVF 13 Optima	m/min	4	→	11	→	34	→	56	→	70	→	82	2	→	6	→	17	→	28	→	35	→	41	25	18	329 m
		t	2,5		2,5		2,5		1,45		1,1		0,65	5		5		5		2,9		2,2		1,3			
●	15 LVF 15 Optima	m/min	2,3	→	6,1	→	19	→	34	→	46							15	11	159 m							
		t	3		3		3		1,7		0,95																
●	25 LVF 15 Optima	m/min	3,6	→	9,6	→	30	→	48	→	60	→	72							25	18	228 m					
		t	3		3		3		1,7		1,3		0,75														
●	RVF 61 Optima +	tr/min U/min - rpm	0 → 0,8										7,5	5,5													
◀ ▶	4 DVF 3	m/min	0 → 63										5	3,7													
	ZC 2030 ZD 2030	RT 224	25										2 x 4	2 x 2,9													
	ZC 4230	RT 324	12,5 - 25										2 x 7	2 x 5,2													
CEI 38 		IEC 38		kVA																							
400 V (+6% -10%) 50 Hz				15 LVF : 25 kVA 25 LVF : 35 kVA																							

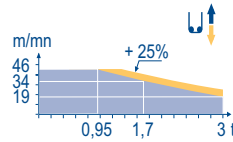
15 LVF 13 Optima



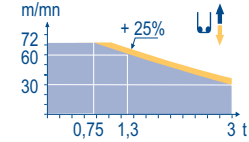
25 LVF 13 Optima



15 LVF 15 Optima



25 LVF 15 Optima



FR

Levage
Distribution
Orientation
Translation

DE

Heben
Katzfahren
Schwenken
Kranfahren

EN

Hoisting
Trolleying
Slewing
Travelling

ES

Elevación
Distribución
Orientación
Traslación

IT

Sollevarmento
Distribuzione
Rotazione
Traslazione

PT

Elevação
Distribuição
Rotação
Translação

RU

Подъём
Перемещение каретки
Поворот
Перемещение крана



Document commercial non contractuel. Pour toute information technique se référer à la notice correspondante.

Unverbindliches Vertriebsdokument. Für technische Informationen, siehe die entsprechenden Anweisungen.

This commercial document is not legally binding. For any technical information, please refer to the corresponding instructions.

Documento comercial no contractual. Para cualquier información técnica, ver la noticia correspondiente.

Documento commerciale non vincolante, per tutte le informazioni tecniche fare riferimento al catalogo istruzioni.

Documento comercial não contractual. Para qualquer informação técnica complementar consultar as respectivas instruções.

Этот коммерческий документ не является юридически обязательным. Для получения технической информации, см. соответствующие инструкции.

Manitowoc

Manitowoc
Crane Care

POTAIN 



Americas

Tel : +1 888 479 7278
Tel : +1 717 593 2000

Europe - Middle East - Africa

Tel : +33 (0) 4 72 81 50 00
Tel : +44 (0) 191 522 2000

Asia - Pacific

Tel : +65 6264 1188
Fax : +65 6862 4040

www.manitowoccranes.com

18, rue de Charbonnières - B.R.173
69132 ECULLY Cedex - France

Tél. : +33 (0) 4 72 18 20 20
Fax. : +33 (0) 4 72 18 20 00
www.manitowoccranes.com

City Topless MCT 88

Réf. 2006 40 MDY 5

Copyright.Reproduction interdite © POTAIN 2006

Réalisation Sedoc